

**MitViDi**

mitvidi.fi

# Software Criteria for Public Procurement

**Nordic Circular ICT project  
Morning coffee webinar  
21.11.2024  
Antti Sipilä, TIEKE NGO**



**Euroopan unionin  
osarahoittama**



Elinkeino-, liikenne- ja  
ympäristökeskus

# MitViDi-project and Design Science



Euroopan unionin  
osarahoittama



# MitViDi

- Metrics for Green Public Software Procurement
- 1.1.2022 – 30.9.2023
- Funded by EU regional development fund



**UNIVERSITY  
OF TURKU**

**TURKU AMK**  
TURKU UNIVERSITY OF  
APPLIED SCIENCES



**TURKU  
SCIENCE  
PARK Oy Ltd**



**LUT  
University**



**TIEKE**



European Union  
European Regional  
Development Fund

Leverage from  
**the EU**  
2014–2020



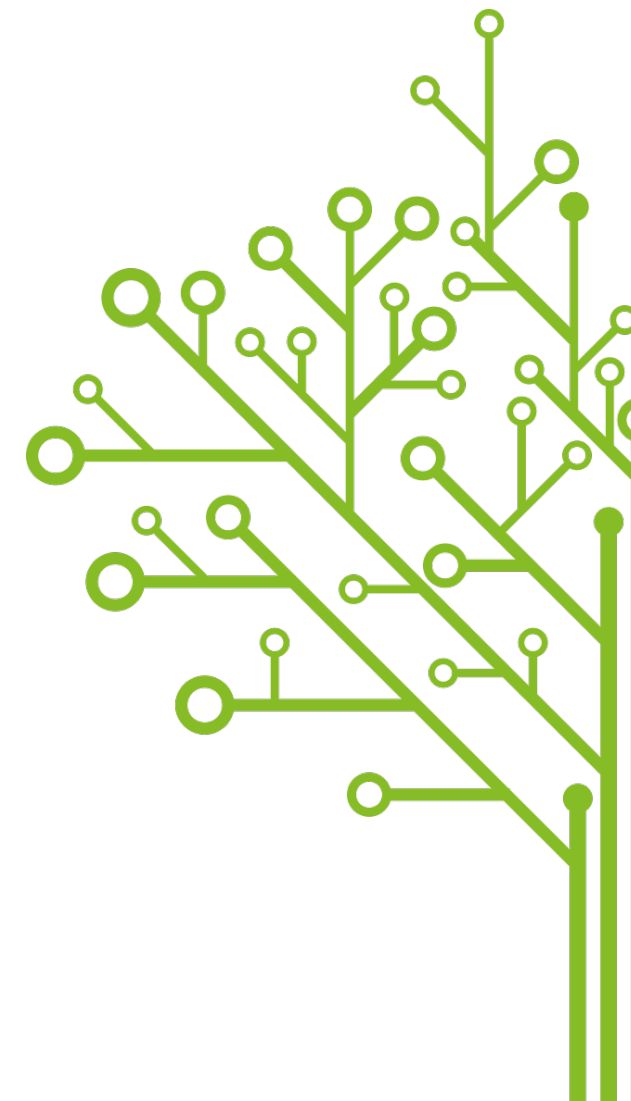
Helsinki-Uusimaa  
Regional Council



REGIONAL  
COUNCIL  
OF SOUTH  
KARELIA



Regional Council of  
Southwest Finland

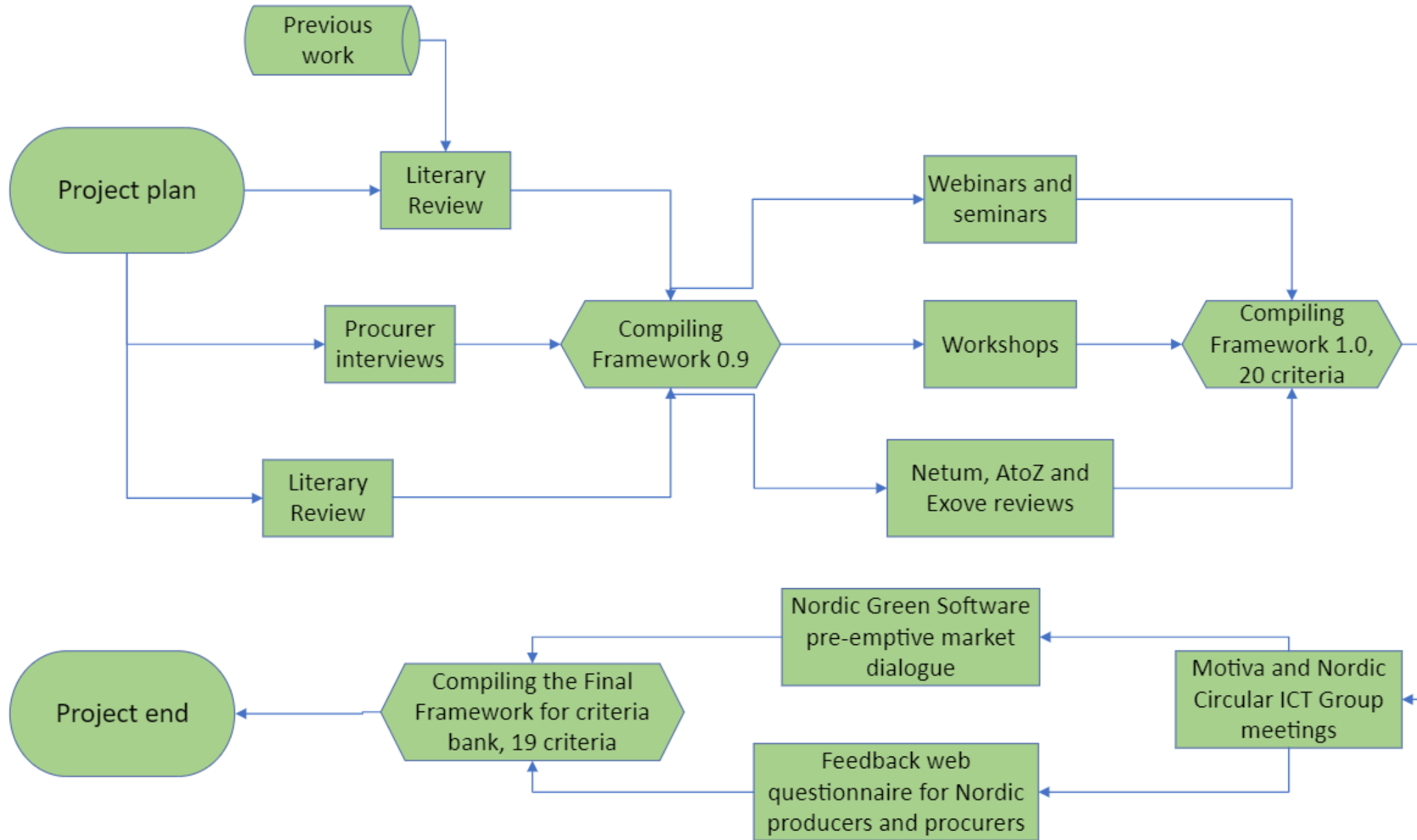


**MitViDi**  
mitvidi.fi



Euroopan unionin  
osarahoittama

# Design Science Process



# Criteria Card and Example

VISIIRI.

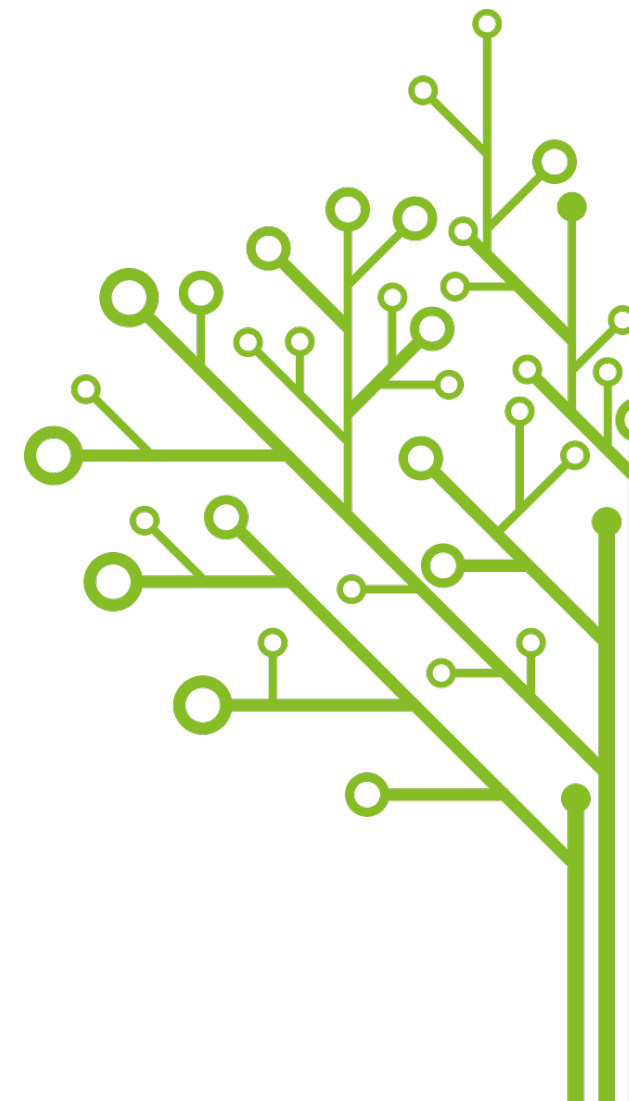


European unionin  
osarahoittama



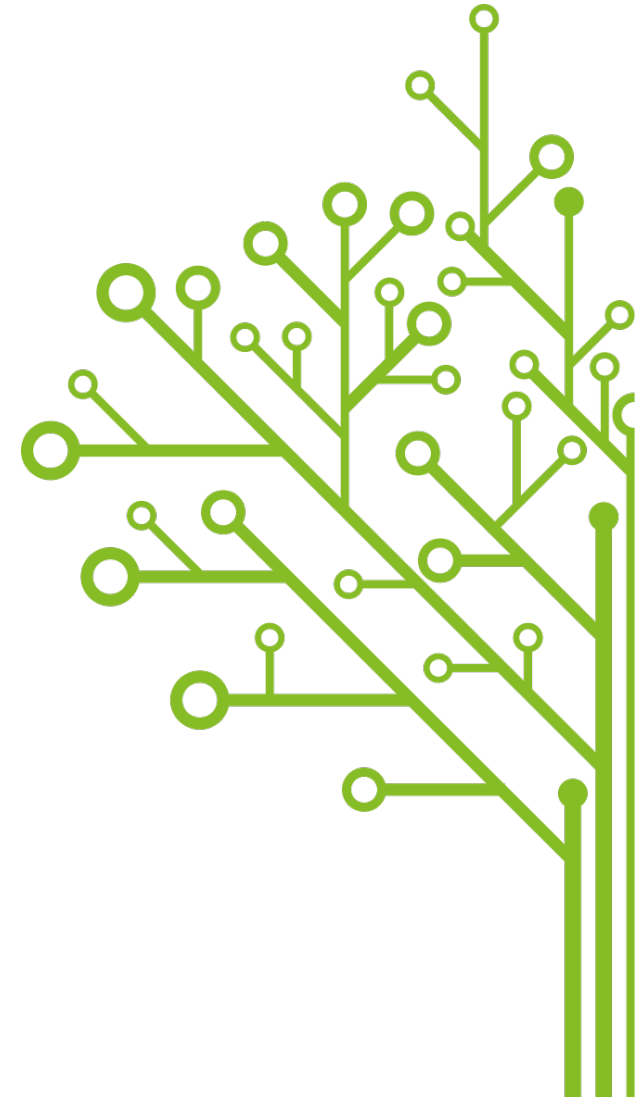
# Criteria Cards

- Criterion name – Descriptive identifier
- Criterion – Text body for procurement use
- Level – Basic, advanced or top
- Proposal for use – When in the procurement to use the criteria and how
- Verification – How to verify if it is fulfilled
- Rationale – Description of how the criterion works for environment



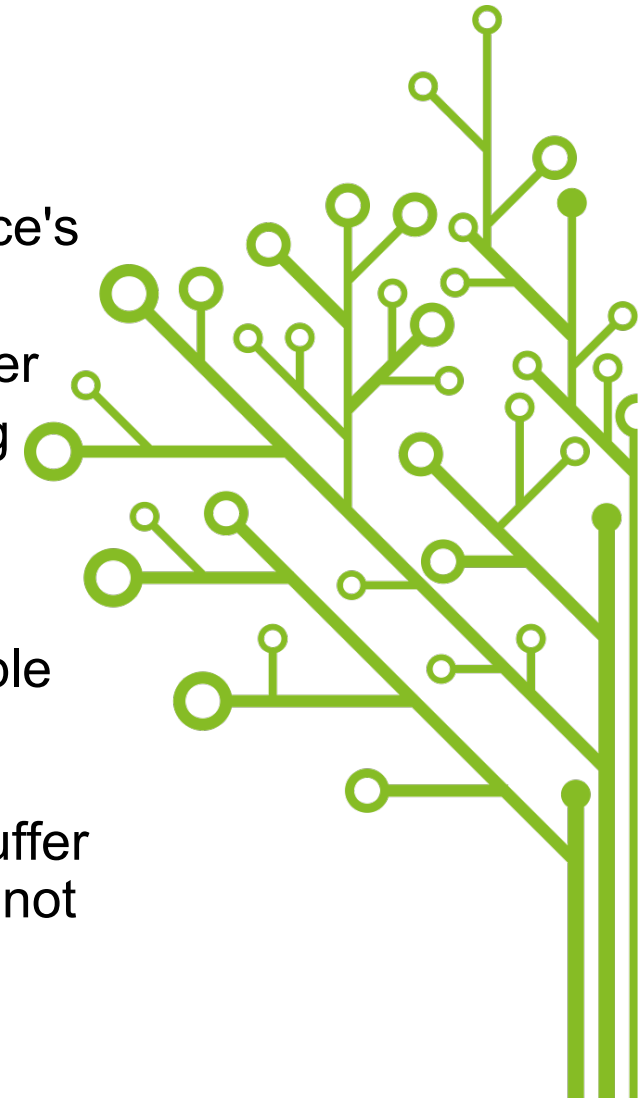
# Criterion Card – Example

- **Criterion Name** | Software and Device Power Management Features
- **Level** | Basic
- **Criterion** | The software and the device's power management do not prevent each other's use as follows. a) The software does not prevent the device's power management functionalities without justification. b) The user experience of the software does not suffer from the support of power management.
- **Proposal for using the criterion** | We recommend using the criterion as a minimum requirement.



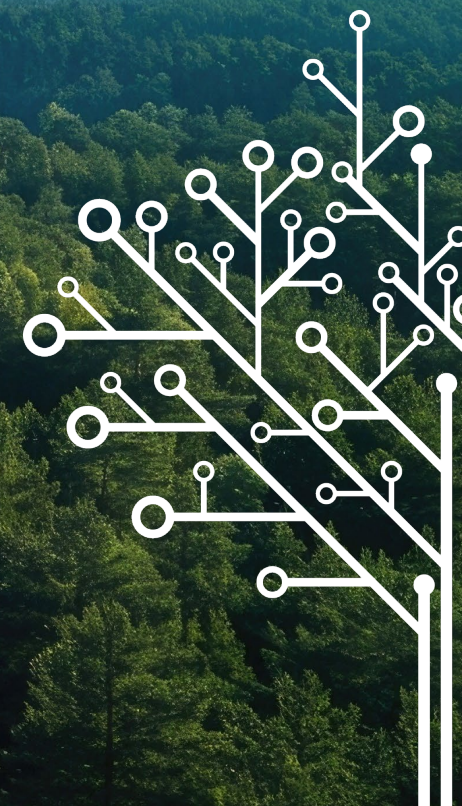
# Criterion Card – Example

- **Verification** | Via testing it is ensured that the operation of the device's power management features does not interfere with the software session and that the software's operation does not prevent the power management features from functioning. Testing is carried out during the contract period, at the latest with the software's release version.
- **Rationale** | Various power management functionalities significantly save energy and resources if used correctly. Therefore, it is advisable for the software to allow their operation unless there are specific reasons to prevent it. To encourage users to utilize power management features, the software's user experience should not suffer from their use. This mainly means that the user's or session data is not lost, although logging in again for security reasons is acceptable.





# What Next?



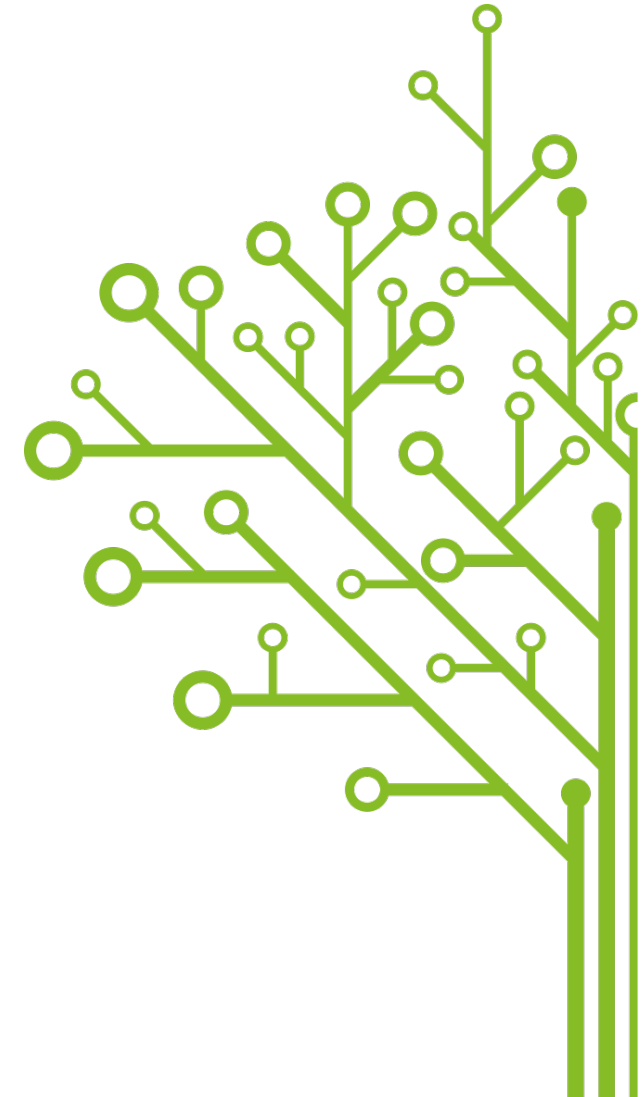
**VISIIRI.**



**Euroopan unionin  
osarahoittama**

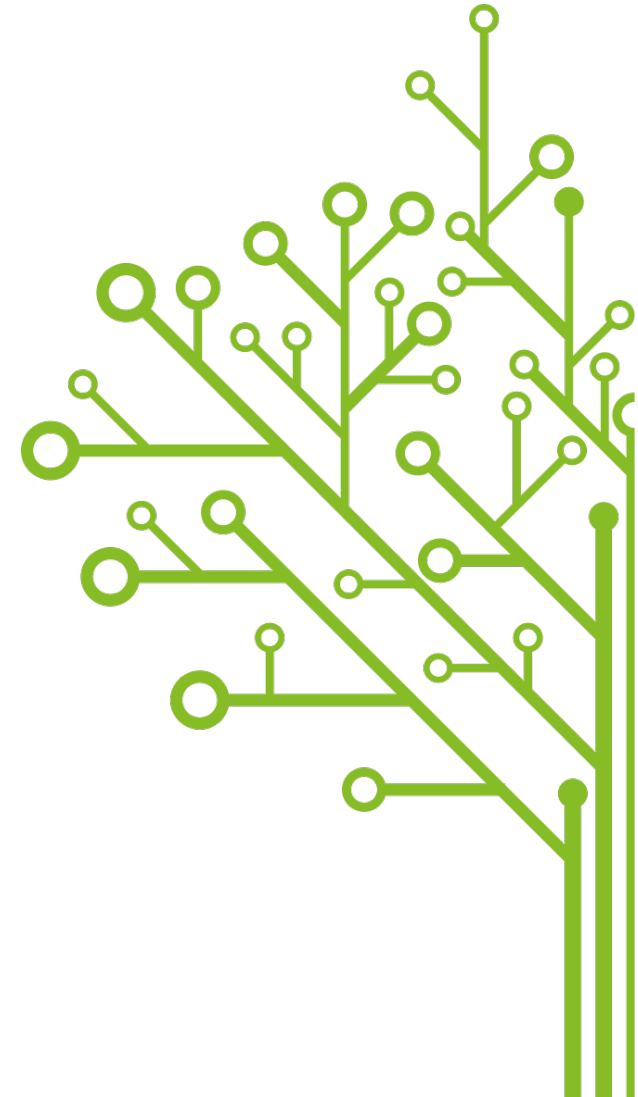
# Future Plans

- New Project "Ympäristö OK", Environmental Software Criteria
- Project plan submitted to a funding call
- 10-15 new footprint criteria
- 5-10 handprint criteria
- CSRD/ESRS sustainability data included



# Criteria Bank

- Administrator: Motiva
- In Finnish, Swedish and English
- ICT-criteria include Data Centres, User Devices, Printers, and Software
- <https://kriteeripankki.fi/>



# Thank You!

Sustainable development is a gradual shift  
in mindset and practice

Ecosystem: <https://greenict.fi/>

LinkedIn: Sustainable ICT Finland –group

WWW: <https://tieke.fi/hankkeet/green-ict-visiiri/> and Youtube @tiekery

Email: [antti.sipila@tieke.fi](mailto:antti.sipila@tieke.fi)

Email: [tuomas.makila@utu.fi](mailto:tuomas.makila@utu.fi)

Social media:

@tiekery | <https://linkedin.com/in/tiekery/>

@ajsipila | <https://www.linkedin.com/in/sipila/>

@uniturku | <https://www.linkedin.com/school/uniturku/>



**UNIVERSITY  
OF TURKU**

**TURKU AMK**  
TURKU UNIVERSITY OF  
APPLIED SCIENCES



**TURKU  
SCIENCE  
PARK** Oy  
Ltd

**LUT  
University**

**TIEKE**



European Union  
European Regional  
Development Fund

Leverage from  
the EU  
2014–2020



Helsinki-Uusimaa  
Regional Council



REGIONAL  
COUNCIL  
OF SOUTH  
KARELIA

**Regional Council of  
Southwest Finland**